



**ΕΛ.Ε.ΨΥ.**

ΕΛΛΗΝΙΚΗ ΕΤΑΙΡΕΙΑ ΚΛΙΝΙΚΗΣ  
ΨΥΧΟΦΑΡΜΑΚΟΛΟΓΙΑΣ

UNDER THE AUSPICES OF



ΕΘΝΙΚΟ ΚΑΙ ΚΑΠΟΔΙΣΤΡΙΑΚΟ  
ΠΑΝΕΠΙΣΤΗΜΙΟ ΑΘΗΝΩΝ



ΠΑΝΕΠΙΣΤΗΜΙΟ  
ΙΩΑΝΝΙΝΩΝ



ΠΕΡΙΦΕΡΕΙΑ ΗΠΕΙΡΟΥ



# 11<sup>th</sup>

## NATIONAL CONGRESS OF CLINICAL PSYCHOPHARMACOLOGY HELLENIC SOCIETY FOR CLINICAL PSYCHOPHARMACOLOGY

WITH INTERNATIONAL PARTICIPATION

APRIL 20<sup>th</sup>-22<sup>nd</sup> 2023  
Hotel DU LAC - IOANNINA

Congress is marked  
with 23 credits  
of Continuing  
Medical Education  
(CME-CPD credits)  
by the Panhellenic  
Medical Association

PROGRAMME

**Spravato**<sup>®</sup>  
(esketamine)  
nasal spray

**Βγαίνοντας  
από τη σκιά  
της κατάθλιψης**

**Το SPRAVATO<sup>®</sup> αλλάζει την αντιμετώπιση της ανθεκτικής  
στη θεραπεία κατάθλιψης.**



Έναρξη δράσης ήδη  
από τις **24 ώρες**<sup>†,POP</sup>



Μοναδική χορήγηση σε μορφή  
**ρινικού εκνεφώματος**<sup>SPC</sup>

Το SPRAVATO<sup>®</sup>, σε συνδυασμό με έναν SSRI ή SNRI, ενδείκνυται για ενήλικες με ανθεκτική στη θεραπεία μείζονα καταθλιπτική διαταραχή, οι οποίοι δεν έχουν ανταποκριθεί σε τουλάχιστον δύο διαφορετικές θεραπείες με αντικαταθλιπτικά κατά το τρέχον μέτριο έως σοβαρό καταθλιπτικό επεισόδιο.<sup>SPC</sup>  
Το SPRAVATO<sup>®</sup>, συγχρησιμοποιούμενο με από στόματος χορηγούμενη αντικαταθλιπτική θεραπεία, ενδείκνυται σε ενήλικες με μέτριο έως σοβαρό επεισόδιο Μείζονος Καταθλιπτικής Διαταραχής, οι οποίοι βραχυχρόνια θεραπεία, για την ταχεία μείωση των καταθλιπτικών συμπτωμάτων, τα οποία σύμφωνα με την κλινική κρίση συνιστούν ένα ψυχιατρικό επείγον περιστατικό.<sup>SPC</sup>  
†Σε ενήλικους ασθενείς (ηλικίας 18 έως 64 ετών), όπως μετρήθηκε βάσει της συνολικής βαθμολογίας MADRS. Η αποτελεσματικότητα στις 24 ώρες δεν αποτέλεσε πρωτεύον καταληκτικό σημείο στη μελέτη TRANSFORM-2.<sup>POP</sup>

**Βιβλιογραφία:** POP Ravona V et al. Am J Psychiatry 2019; 176(6): 428–438. **SPC SPRAVATO<sup>®</sup>**, Περίληψη των Χαρακτηριστικών του Προϊόντος, Αύγουστος 2022.

Το φάρμακο αυτό τελεί υπό συμπληρωματική παρακολούθηση. Αυτό θα επιτρέψει το γρήγορο προσδιορισμό νέων πληροφοριών ασφάλειας. Ζητείται από τους επαγγελματίες υγείας να αναφέρουν οποιοδήποτε πιθανολογούμενο ανεπιθύμητες ενέργειες. Βλέπε παράγραφο 4.8 για τον τρόπο αναφοράς ανεπιθύμητων ενεργειών.

Η Περίληψη των Χαρακτηριστικών του Προϊόντος βρίσκεται σε επόμενη σελίδα.  
Με ειδική ιατρική συνταγή του Ν3459/06 περί ναρκωτικών (Πίνακας Γ): Μόνο για Νοσοκομειακή χρήση.  
ΡΙΝΙΚΟ ΕΚΝΕΦΩΜΑ, ΔΙΑΛΥΜΑ 28ΜΓ/περίεκτη (VIAL) - 1 περίεκτη εκνεφώματος (VIAL): Ν.Τ. 193,76€, Λ.Τ. 255,85€

**JANSSEN-CILAG ΦΑΡΜΑΚΕΥΤΙΚΗ Α.Ε.Β.Ε.**

Λεωφόρος Ειρήνης 56, 151 21, Πεύκη, Αθήνα, Τηλ.: 210 8090000  
www.janssen.com.gr

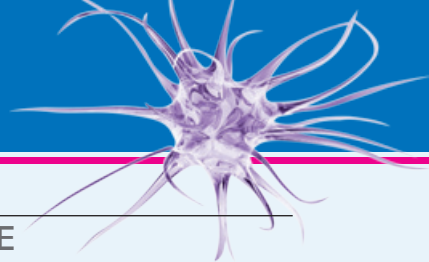
Βοηθήστε να γίνουν τα φάρμακα πιο ασφαλή και  
Αναφέρετε  
ΟΛΕΣ τις ανεπιθύμητες ενέργειες για  
ΟΛΑ τα φάρμακα  
Συμπληρώνοντας την «ΚΙΤΡΙΝΗ ΚΑΡΤΑ»

**janssen** Neuroscience

PHARMACEUTICAL COMPANIES OF **βοιοίνισ-βοιοίνισ**



07-34519.9/09/22/007



---

## ORGANIZING COMMITTEE

**President** I. Chatzimanolis

**Members** Th. Mougiakos  
D. Roukas  
Ch. Tsopelas  
G. Moukas

---

## SCIENTIFIC COMMITTEE

### Members

G. Alevizopoulos	V. Masdrakis
D. Baldwin	Th. Mougiakos
I. Chatzimanolis	G. Moukas
Th. Christodoulakis	A.A. Nierenberg
A.H. Clayton	G. Papageorgiou
D. Dimellis	G. Petrides
A. Dimopoulos	P. Skapinakis
R. Emsley	N. Smyrnis
J.H. Krystal	M.E. Thase
P. Levounis	Ch. Touloumis
C. Lyketsos	I. Zervas

# Covolos<sup>®</sup>

## Donepezil Hydrochloride

# Cognomem<sup>®</sup>

## Memantine Hydrochloride

# Eslorex<sup>®</sup>

## Escitalopram

# Rivastigmine/Zentiva<sup>®</sup>

## Ριβαστιγμίνη

# Memodrin<sup>®</sup>

## Aniracetam

Φαρμακευτικό προϊόν για το οποίο απαιτείται περιορισμένη ιατρική συνταγή από ειδικό ιατρό και παρακολούθηση κατά τη διάρκεια της αγωγής.  
Covolos<sup>®</sup> F.C.TAB 5MG/TAB BTx30 Λ.Τ.: 15,25€  
Covolos<sup>®</sup> F.C.TAB 10MG/TAB BTx30 Λ.Τ.: 21,87€

Φαρμακευτικό προϊόν για το οποίο απαιτείται περιορισμένη ιατρική συνταγή από ειδικό ιατρό και παρακολούθηση κατά τη διάρκεια της αγωγής.  
Cognomem<sup>®</sup> F.C.TAB 10MG/TAB BTx30 Λ.Τ.: 12,75€  
Cognomem<sup>®</sup> F.C.TAB 20MG/TAB BTx30 Λ.Τ.: 22,43€

Φαρμακευτικό προϊόν για το οποίο απαιτείται ιατρική συνταγή.  
Eslorex<sup>®</sup> OR.DISP.TA 10MG/TAB BTx14 Λ.Τ.: 4,14€  
Eslorex<sup>®</sup> OR.DISP.TA 20MG/TAB BTx14 Λ.Τ.: 7,87€

Φαρμακευτικό προϊόν για το οποίο απαιτείται περιορισμένη ιατρική συνταγή από ειδικό ιατρό και παρακολούθηση κατά τη διάρκεια της αγωγής.  
Rivastigmine/Zentiva<sup>®</sup> TTS 4,6MG/24H BTx30 Λ.Τ.: 18,70€  
Rivastigmine/Zentiva<sup>®</sup> TTS 9,5MG/24H BTx30 Λ.Τ.: 27,61€

Φαρμακευτικό προϊόν για το οποίο απαιτείται ιατρική συνταγή.  
Memodrin<sup>®</sup> F.C.TAB 750MG/TAB BTx60 Λ.Τ.: 24,71€  
Memodrin<sup>®</sup> GRA.OR.SOL 1500MG/SACHET BTx30 SACHETS Λ.Τ.: 24,80€

## ZENTIVA

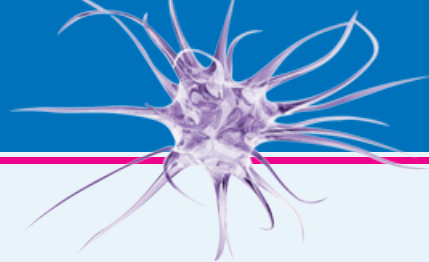
ΚΑΤΟΧΟΣ ΤΗΣ ΑΔΕΙΑΣ ΚΥΚΛΟΦΟΡΙΑΣ Cognomem<sup>®</sup>,  
Eslorex<sup>®</sup> & Rivastigmine/Zentiva<sup>®</sup>  
Zentiva, k.s.  
U Kabelovny 130, Dolni Měcholupy  
102 37, Prague 10, Τσεχική Δημοκρατία  
Τηλ: +30 211 198 7510, email: PV-Greece@zentiva.com

ΚΑΤΟΧΟΣ ΤΗΣ ΑΔΕΙΑΣ ΚΥΚΛΟΦΟΡΙΑΣ Covolos<sup>®</sup>  
Lavipharm A.E.  
Οδός Αγίας Μαρίνας, 190 02, Παιανία Αττικής  
Τηλ.: 210 6691 000

ΚΑΤΟΧΟΣ ΤΗΣ ΑΔΕΙΑΣ ΚΥΚΛΟΦΟΡΙΑΣ Memodrin<sup>®</sup>  
Lavipharm Hellas A.E.  
Οδός Αγίας Μαρίνας, 190 02, Παιανία Αττικής  
Τηλ.: 210 6691 000

ΥΠΕΥΘΥΝΟΣ ΠΡΩΤΟΘΗΣΗΣ & ΔΙΑΝΟΜΗΣ  
Lavipharm Hellas A.E.  
Οδός Αγίας Μαρίνας, 190 02, Παιανία Αττικής  
Τηλ.: 210 6691 000

Βοηθήστε να γίνουν τα φάρμακα πιο ασφαλή και  
Αναφέρετε  
ΟΑΕΣ της ανεπιθύμητης ενέργειας για  
ΟΛΑ τα φάρμακα  
Συμπληρώνοντας την «ΚΙΤΡΙΝΗ ΚΑΡΤΑ»



## WELCOME MESSAGE

Dear Colleagues,

In a climate of enthusiasm and partial relief, after the looming ending of the particularly unpleasant Covid-19 pandemic period, it is with great pleasure to welcome you to the 11th Annual Conference of the Hellenic Association of Clinical Psychopharmacology (HACPP).

You already know that HACPP is a perennial provider of education in psychiatry, with educational activities that respect the delegates' needs.

With the experience of a more than 10-year contribution to education, we create the future of psychiatric training in our country and we contribute using both technology and innovation, in the improvement of psychiatric knowledge. We provide solutions in the diagnostic and therapeutic stalemates of Greek psychiatrists.

HACPP was born as a «strategic investor» of education in Biological Psychiatry and Psychopharmacology, at first as a child of the Hellenic Psychiatric Association (HPA), in order to cover the pathologies and imperfections, which once existed and perhaps still continue in our institutional association (HPA).

Thus, HACPP, continues to provide the once believed impossible task in forming the training in Biological Psychiatry and Psychopharmacology as one of the major leaders in this educational field.

The moment that we have all been waiting for, has arrived. We are ready not only to do the next step, but most importantly to take a leap towards the future.

The recognition of our long-term effort, which was adequately evaluated, by analogous psychopharmacological associations globally, led to the current result.

In particular, we have the honor and pleasure to host as speakers at our conference quite a few of distinguished professors of psychiatry from the USA and Europe.

These are colleagues of global scope with academic achievements and large number of publications, in highly prestigious psychiatric journals. In their lectures they will present similar research and clinical topics for us.

Their presence greatly honors us, upgrades our conference, adding perspective and doing it more prestigious. We thank them all from the bottom of our hearts.

So with the certainty that all attendees will experience a highly productive and interesting conference, I welcome you to this great educational celebration of psychiatry and I hope that we get the thoroughgoing possible benefits from one effort that has lofty goals.

With friendly greetings

On behalf of the Organizing Committee of the 11th Conference of HACPP.

The President of HACPP.

Ioannis Chatzimanolis



# 11<sup>th</sup>

NATIONAL CONGRESS OF CLINICAL  
PSYCHOPHARMACOLOGY  
HELLENIC SOCIETY FOR CLINICAL  
PSYCHOPHARMACOLOGY

APRIL 20<sup>th</sup>-22<sup>nd</sup> 2023  
Hotel DU LAC - IOANNINA

# 11<sup>th</sup>

NATIONAL CONGRESS OF CLINICAL  
PSYCHOPHARMACOLOGY  
HELLENIC SOCIETY FOR CLINICAL  
PSYCHOPHARMACOLOGY

APRIL 20<sup>th</sup>-22<sup>nd</sup> 2023 | Hotel DU LAC - IOANNINA

## PROGRAMME

---

**Thursday, April 20<sup>th</sup> 2023**

ARRIVALS-REGISTRATIONS

**13.00-13.45** LECTURE

*Chair:* **Ch. Touloumis**

Treatment development for Neuropsychiatric Symptoms (NPS) in Alzheimer's disease: past, present, future

**C. Lyketsos**

**13.45-14.30** LECTURE

*Chair:* **D. Dikeos**

Differentiating between symptoms of MDD and adverse effects of antidepressant medications

**A.H. Clayton**

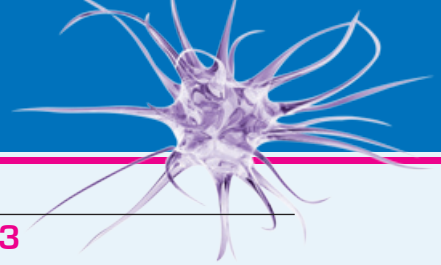
**14.30-15.15** LECTURE

*Chair:* **Th. Mougiakos**

The Challenges of Treating Bipolar Depression

**A.A. Nierenberg**

**15.15-15.45** Coffee Break in the Exhibition Area



---

**Thursday, April 20<sup>th</sup> 2023****15.45-16.30** LECTURE*Chair: I. Zervas*ECT for the treatment of severe agitation in patients  
with Dementia**G. Petrides****16.30-17.15** LECTURE*Chair: G. Papageorgiou*Mild Behavioral Impairment (MBI) as a target  
for dementia prevention**C. Lyketsos****17.15-18.00** LECTURE*Chair: Th. Christodoulakis*The Technological Addictions:  
The New Frontier in Addiction Psychiatry**P. Levounis****18.00-18.30** Coffee Break in the Exhibition Area**18.30-19.15** Industry Lectures / Symposia**19.15-20.00** LECTURE*Chair: Th. Christodoulakis*

The Neurobiology of Addiction in 2023

**P. Levounis****20.00-20.15** SALUTATION OF THE PRESIDENT OF HACP**I. Chatzimanolis****20.15-21.00** OPENING LECTURE*Chair: N. Smyrnis*Personalizing medicine through big data  
and artificial intelligence**A. Dimopoulos****Congress Dinner (Hotel Du Lac, Central Building)**

---

Friday, April 21<sup>st</sup> 2023

**09.00-09.45** LECTURE

*Chair:* **Th. Mougiakos**

Pharmacogenomics of Major Depressive Disorder  
**A.A. Nierenberg**

**09.45-11.15** SYMPOSIUM

*Chair:* **N. Smyrnis**

Cognitive deficit in Schizophrenia:  
the paradigm of eye movements

**N. Smyrnis**

The newest antipsychotic drugs at the threshold  
of the new millennium

**D. Dimellis**

ECT in special populations: pregnancy and autoimmune  
encephalitis

**G. Petrides**

**11.15-11.45** Coffee Break in the Exhibition Area

**11.45-12.30** LECTURE

*Chair:* **G. Moukas**

Unmet needs and novel therapies  
of major depressive disorder

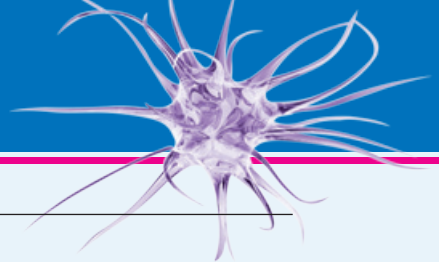
**M.E. Thase**

**12.30-13.30** Industry Lectures / Symposia

**13.30-14.15** Industry Lectures / Symposia

Afternoon Break





---

**Friday, April 21<sup>st</sup> 2023**

**16.00-16.45 Industry Lectures / Symposia**

**16.45-17.30 LECTURE**

*Chair: G. Alevizopoulos*

Long term management of recurrent and chronic depression  
**M.E. Thase**

**17.30-18.15 Industry Lectures / Symposia**

**18.15-18.45 Coffee Break in the Exhibition Area**

**18.45-19.30 Industry Lectures / Symposia**

**19.30-20.15 Industry Lectures / Symposia**

**20.15-21.00 LECTURE**

*Chair: I. Zervas*

Reproductive psychiatry - PMDD, perinatal depression and  
perimenopausal mood symptoms: Diagnosis and treatment  
**A.H. Clayton**

**Congress Dinner (Hotel Du Lac, Central Building)**

---

**Saturday, April 22<sup>nd</sup> 2023**

**09.00-10.30 SYMPOSIUM**

**Effective interventions for anxiety disorders**

*Chair:* **P. Skapinakis**

The relationship between symptoms and disorders of anxiety and suicidality

**V. Masdrakis**

Specialty knowledge and competency standards for pharmacotherapy of adult obsessive-compulsive disorder: A summary of the International OCD Accreditation Task Force recommendations

**P. Skapinakis**

Clinical management of benzodiazepine dependence and withdrawal syndromes

**D. Baldwin**

**10.30-11.15 LECTURE**

*Chair:* **N. Smyrnis**

Translating our current understanding of schizophrenia to optimal outcomes in clinical practice

**R. Emsley**

**11.15-11.45 Coffee Break in the Exhibition Area**

**11.45-12.30 Industry Lectures / Symposia**

**12.30-13.15 Industry Lectures / Symposia**

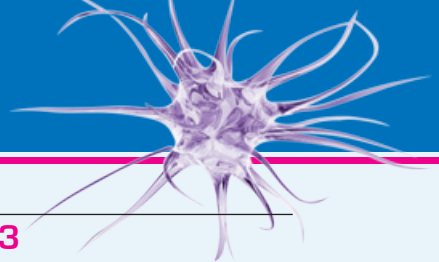
**13.15-14.00 LECTURE**

*Chair:* **V. Masdrakis**

Non-prescribed use of gabapentinoid drugs: Mechanisms, predisposing factors, associated hazards and clinical management

**D. Baldwin**

**Afternoon Break**



---

**Saturday, April 22<sup>nd</sup> 2023**

**16.00-16.45** LECTURE

*Chair: D. Dimellis*

Rapid-acting antidepressants:

New treatments, new hope, and new insights into the brain

**J.H. Krystal**

**16.45-17.30** LECTURE

*Chair: G. Papageorgiou*

The origins and underlying neurobiology of schizophrenia  
as explained by the neurodevelopmental and dopamine  
hypotheses

**R. Emsley**

**17.30-18.15** Industry Lectures / Symposia

**18.15-18.45** Coffee Break in the Exhibition Area

**18.45-19.30** Industry Lectures / Symposia

**19.30-20.15** LECTURE

*Chair: Ch. Touloumis*

Glutamate and alcohol intoxication, alcohol reward,  
and treatment of alcohol use disorders

**J.H. Krystal**

**20.15-21.00** Industry Lectures / Symposia

**Congress Dinner (Hotel Du Lac, Central Building)**

---

## Sponsored Sessions

---

### Thursday, April 20<sup>th</sup> 2023

#### 18.30-19.15 SATELLITE LECTURE

*Chair:* **Ch. Tsopelas**

A New Approach for Rapid Intervention in Major Depressive Disorder: Activating the Glutaminergic Neurotransmission  
**D. Dimellis**

Sponsored by  **Janssen**  
PHARMACEUTICAL COMPANY OF  
JOHNSON & JOHNSON

---

### Friday, April 21<sup>st</sup> 2023

#### 12.30-13.30 SATELLITE LECTURE

**Effective Treatment options in schizophrenia and bipolar disorder**

*Chair:* **Ch. Tsopelas**

The choice of paliperidone prolonged-release tablets for the treatment of patients with schizophrenia: Scientific data and noteworthy differences

**G. Moukas**

Asenapine monotherapy and add-on treatment, in patients with bipolar disorder: Significant scientific evidence based data

**D. Roukas**


Sponsored by  **BIANEE** Α.Ε.  
ΒΙΟΦΑΡΜΑΚΕΥΤΙΚΗ ΕΠΙΧΕΙΡΗΣΗ

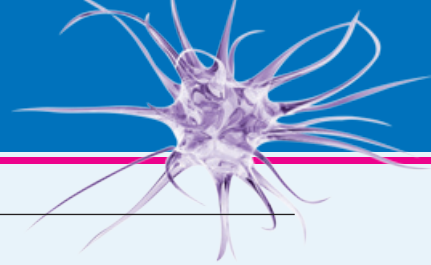
#### 13.30-14.15 SATELLITE LECTURE

*Chair:* **D. Roukas**

New perspectives in the management of daily stress:  
The role of gut-brain axis

**F. Kouniakis**

Sponsored by  **ELPEN**



---

## Sponsored Sessions

---

Friday, April 21<sup>st</sup> 2023


---

**16.00-16.45** SATELLITE LECTURE

*Chair:* **N. Stefanis**

Minimal effective dose of psychotropics

**Ch. Touloumis**

Sponsored by 

**17.30-18.15** SATELLITE LECTURE

*Chair:* **P. Skapinakis**

New scientific data in the treatment of MDD

**D. Roukas**

Sponsored by  **innovis**  
Future health today

**18.45-19.30** SATELLITE LECTURE

*Chair:* **D. Dikeos**

How to treat depressive disorders with comorbid anxious disorder

**Ph. Gorwood**

Sponsored by  **VIATRIS**

**19.30-20.15** SATELLITE LECTURE

**Can aLAIs make a difference in the treatment of patients with schizophrenia?**

*Chair:* **I. Diakogiannis**

The value of aLAIs in the treatment of schizophrenia

**V. Bozikas**

The role of Aripiprazole Monthly in the long-term symptoms control

**P. Panagiotidis**

Sponsored by  **Lundbeck** 

---

**Saturday, April 22<sup>nd</sup> 2023**

**11.45-12.30** SATELLITE LECTURE

*Chair:* **D. Roukas**

The role of dose dependent efficacy on treatment  
outcomes in MDD

**M. Alsuwaidan**

Sponsored by  

**12.30-13.15** SATELLITE LECTURE

*Chair:* **N. Smyrnis**

A Recent Update in Treatment Resistant Depression  
Therapy: Focusing on Total Rehabilitation

**P. Ferentinos**

Sponsored by 

**17.30-18.15** SATELLITE LECTURE

*Chair:* **Ch. Touloumis**

Apolipoprotein E (APOE) and the role of tramiprosate/  
homotaurine

**M. Tsolaki**

Sponsored by  

**18.45-19.30** SATELLITE LECTURE

*Chair:* **D. Dikeos**

Trazodone: The secret of success

**C. Arango**

Sponsored by 

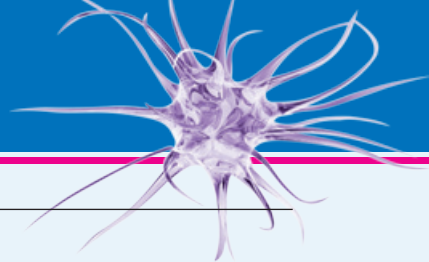
**20.15-21.00** SATELLITE LECTURE

*Chair:* **S. Pappa**

How to Use Cariprazine: An Evidence-Based Approach

**L. Citrome**

Sponsored by 



---

## CHAIRS - SPEAKERS

- Alevizopoulos George MD, PharmD, PhD, DFP Prof. of Forensic Psychiatry, NKUA**
- Alsuwaidan Mohammad MD, MPH, FRCPC, DipABPN Assistant Professor of Psychiatry - University of Toronto, Canada Founder and Clinical Director - MindWell, Kuwait Chief Medical Officer - TMS NextGen, Dubai**
- Arango Celso MD, MPH, Clinical Professor, Psychiatry and Behavioral Sciences, New York Medical College, Valhalla, New York**
- Baldwin David MA DM FRCPsych FHEA FRSA Professor of Psychiatry and Head of the Mental Health Group in the Clinical and Experimental Sciences Academic Unit of the Faculty of Medicine at the University of Southampton, UK**
- Bozikas Vasilios Professor of Psychiatry Director of the 2nd Department of Aristotle University of Thessaloniki**
- Chatzimanolis Ioannis Chairman of the H.S.C.P.**
- Christodoulakis Theodosios MD, Psychiatrist**
- Citrome Leslie MD, MPH, Clinical Professor, Psychiatry and Behavioral Sciences, New York Medical College, Valhalla, New York**
- Clayton H. Anita MD, DLFAPA, IF Professor at David C. Wilson and Chair of Psychiatry & Neurobehavioral Sciences and Professor of Clinical Obstetrics & Gynecology at the University of Virginia, USA**
- Diakogiannis Ioannis Professor of Psychiatry - Chairman 1st Department of Psychiatry Aristotle University Thessaloniki**
- Dikeos Dimitrios Professor of Psychiatry, First Department of Psychiatry, Eginition Hospital, National and Kapodistrian University of Athens**
- Dimellis Dimos MD, PhD, Psychiatrist**
- Dimopoulos Athanasios Professor and Rector of the National and Kapodistrian University of Athens Plasma Cell Dyscrasias Unit Section of Hematology and Medical Oncology Department of Clinical Therapeutics School of Medicine National and Kapodistrian University of Athens Alexandra Hospital**
- Emsley Robin Professor in Psychiatry Sarah Turoff Endowed Chair in Schizophrenia Research Faculty of Medicine and Health Sciences Stellenbosch University, Cape Town, South Africa**
- Ferentinos Panagiotis Associate Professor of Psychiatry, National and Kapodistrian University of Athens, 2nd Department of Psychiatry, Attikon General Hospital, Affective Disorders and Suicide Unit**
- Gorwood Philip MD, PhD, full professor of psychiatry, Head of a 60 beds psychiatric unit at Sainte Anne hospital (CMME), Paris, France, Head of a research team (INSERM U 1266) devoted to the genetic vulnerability of psychiatric disorders, Past-president of the EPA (European Psychiatric Association), Author of more than 300 PubMed articles (h-index=50)**

---

**CHAIRS - SPEAKERS**

**Kouniakos Filippos MD, PhD, Psychiatrist** EGO IDEAL Institute of Mental Health

**Krystal H. John MD** Robert L. McNeil, Jr., Professor of Translational Research Chair, Department of Psychiatry, Yale University School of Medicine Chief of Psychiatry, Yale-New Haven Hospital, USA

**Levounis Petros MD, MA** (he, him, his) Professor and Chair, Department of Psychiatry, and Associate Dean, Rutgers New Jersey Medical School Chief of Service, University Hospital, Newark, New Jersey Director, Northern NJ MAT Center of Excellence, President-Elect, American Psychiatric Association, USA

**Lyketsos Constantine MD, MHS** Johns Hopkins Medicine, USA

**Masdrakis Vasilios** Associate Professor of Psychiatry

**Mougiakos Theodore MD, Psychiatrist, Director of Psychiatric Clinic 4 14 Military Hospital**

**Moukas George MD, PhD, Psychiatrist, member of the board of the Hellenic Association of Clinical Psychopharmacology**

**Nierenberg A. Andrew MD** (he/him/his) Director, Dauten Family Center for Bipolar Treatment Innovation Co-Director, Center for Clinical Research Education Thomas P. Hackett, MD Endowed Chair in Psychiatry at MGH Professor of Psychiatry, Harvard Medical School, Boston, USA

**Panagiotidis Panagiotis MD, PhD, Psychiatrist, 424 MHTH**

**Papageorgiou George** Former Director Evaggelismos Hospital Dpt of Psychiatrist, Athens, Greece

**Pappa Sofia** Associate Professor, Department of Brain Sciences, Imperial College London, Consultant Psychiatrist & Research Lead, West London NHS Trust

**Petrides Georgios MD** Director, Division of ECT The Zucker Hillside Hospital Glen Oaks New York, USA

**Roukas Dimitrios MD, MSc, Psychiatrist, Secretary of the Hellenic Society of Clinical Psychopharmacology**

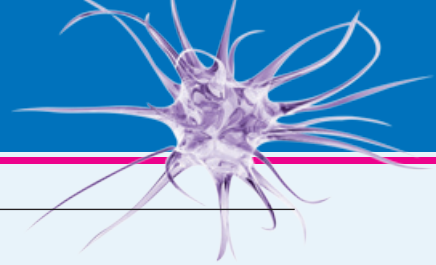
**Skapinakis Petros MD, MPH, PhD, Professor of Psychiatry, University of Ioannina School of Medicine**

**Smyrnis Nikolaos** Professor of Psychiatry, Chairman, 2nd Department of Psychiatry, National and Kapodistrian University of Athens, Medical School, University General Hospital «ATTIKON»

**Stefanis Nikolaos MD, FRANZCP** Prof. and Chair of Psychiatry, National and Kapodistrian University of Athens Medical School

**Thase E. Michael MD** Professor in Psychiatry Departments of Psychiatry Perelman School of Medicine at the University of Pennsylvania Corporal Michael J. Crescenzi Veterans Affairs Medical Center Philadelphia, USA





---

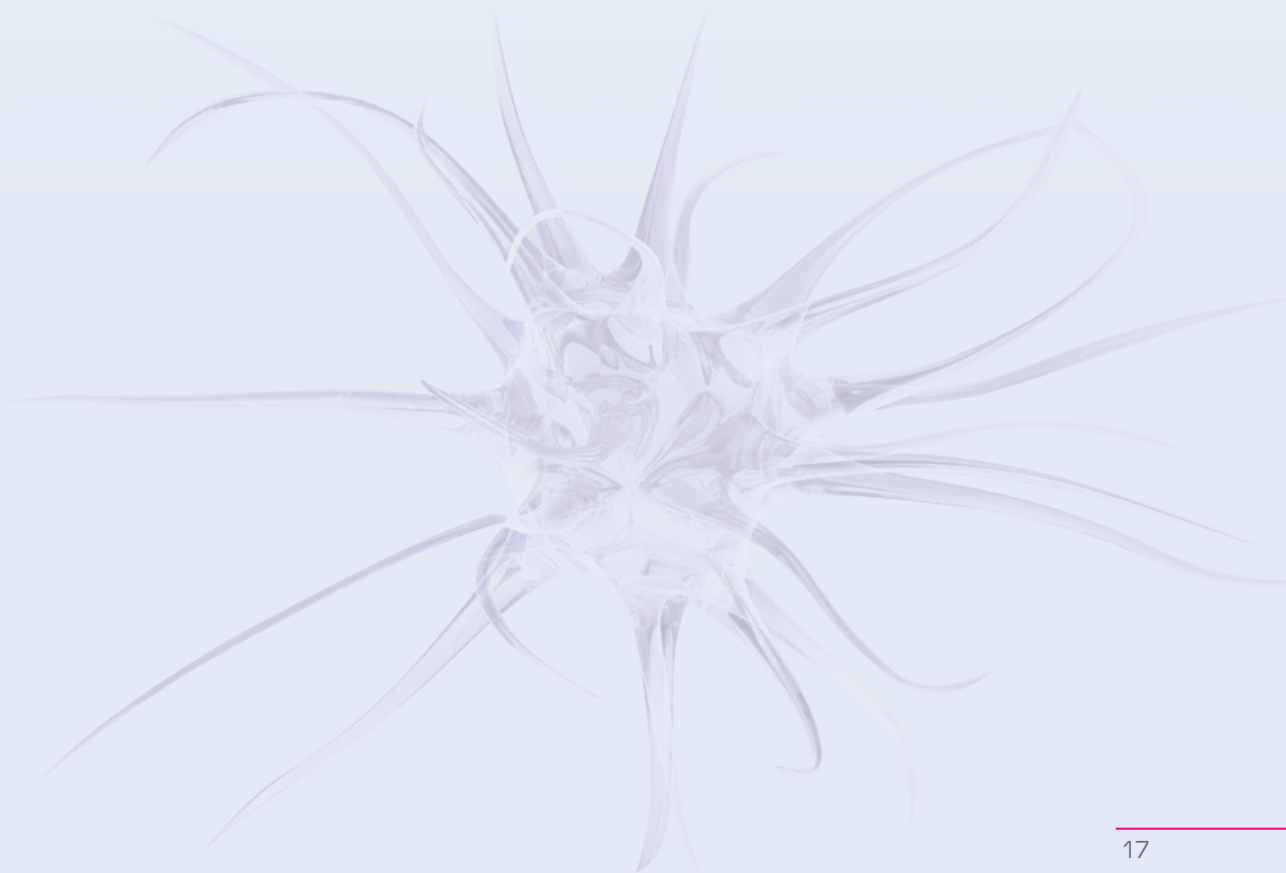
## CHAIRS - SPEAKERS

**Touloumis Charalampos** *Psychiatrist, Coordinator Director, Psychiatric Hospital of Athens*

**Tsolaki Magda** *Neuropsychiatrist, Professor of Neurology Aristotle University of Thessaloniki Coordinator of Laboratory of Neurodegenerative Diseases*

**Tsoelas Christos** *MSc, PhD. Consultant Psychiatrist in Adult Psychiatry*

**Zervas Ioannis** *MD, Professor of Psychiatry and Psychosomatic Medicine, National and Kapodistrian University of Athens Medical School, Director of Womens' Mental Health and Reproductive Psychiatry Clinic, Eginition University Hospital*



## GENERAL INFORMATION

### Conference Dates

April 20<sup>th</sup> -22<sup>nd</sup> 2023

### Venue

Hotel Du Lac - Ioannina

### Congress official language

For the lectures will be held in English there will be simultaneous translation in Greek.

### Registration

The delegate package includes:

- access to the congress room and exhibition hall
- congress attendance
- certificate of attendance

### Accreditation

The congress has been accredited by the Panhellenic Medical Association for a maximum of **23 CME credits**.

### Certificate of Attendance

The certificate of attendance will be sent via email a few days after the end of the conference. Each medical specialist can claim the certificate of attendance if only has attended at least 60% of the total duration of the scientific program. The CME credits will be adjusted proportionally to the time of attendance in the medical specialties only.

**HELLENIC ASSOCIATION  
OF CLINICAL  
PSYCHOPHARMACOLOGY  
(HACPP)**



**ΕΛ.Ε.ΨΥ.**  
ΕΛΛΗΝΙΚΗ ΕΤΑΙΡΕΙΑ ΚΛΙΝΙΚΗΣ  
ΨΥΧΟΦΑΡΜΑΚΟΛΟΓΙΑΣ

### ORGANIZATION - SECRETARIAT



**ONE TO ONE S.A.**

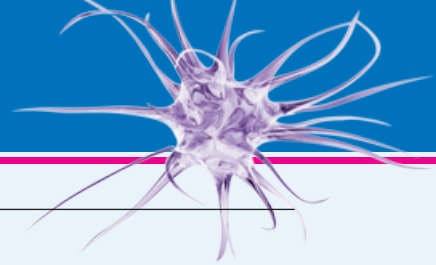
16 Nikis str, 105 57 Athens

Tel.: 2107254383-385-386

• Fax: 2107254384

E-mail: [info@one2onesa.com](mailto:info@one2onesa.com)

<http://www.onetoone-congress.com>



## SPONSORS

Many thanks to the pharmaceutical companies  
for their valuable financial support.



Pharmaceutical Laboratories S.A.



**GAP** από το 1949

**μαζί στην υγεία, στην εξέλιξη, στην καινοτομία**



**Κεντρικό Νευρικό Σύστημα**

**Matepil<sup>®</sup>**  
quetiapine  
ΜΕΓΑΛΗ ΠΑΡΑΓΩΓΙΜΟΤΗΤΑ ΑΠΟΔΟΣΗ

**Zoxil<sup>®</sup>**  
olanzapine

**Espoza<sup>®</sup>**  
escitalopram

**Zopitel<sup>®</sup>**  
donepezil

**Epimat<sup>®</sup>**  
aripiprazole

**Depolan<sup>®</sup>**  
risperidone

**Solben<sup>®</sup>**  
paroxetine

**Lasium<sup>®</sup>**  
rivastigmine



**Θεραπεία Στυτικής Δυσλειτουργίας**

**Ligion<sup>®</sup>**  
tadalafil



**Παθήσεις Πεπτικού**

**Berlex<sup>®</sup>**  
rabeprazole



**ΣΥΜΠΛΗΡΩΜΑΤΑ ΔΙΑΤΡΟΦΗΣ**

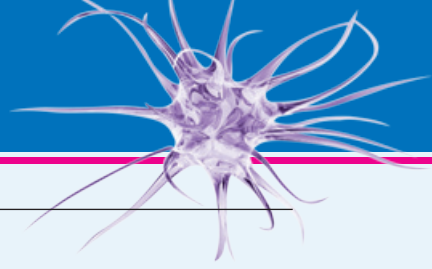


Πρωτοπορία στην παραγωγή μαλακών καψουλών



Δυναμική παρουσία στη Διεθνή Αγορά





NOTES

Series of horizontal lines for writing notes.



# ΣΧΙΖΟΦΡΕΝΕΙΑ:

## ΔΩΣΤΕ ΤΟΥ ΤΗΝ ΟΛΟΚΛΗΡΩΜΕΝΗ ΦΡΟΝΤΙΔΑ ΠΟΥ ΤΟΥ ΑΞΙΖΕΙ



ZypAdhera ADV 04 - 2022



Βοηθήστε να γίνουν τα φάρμακα πιο ασφαλή και Αναφέρετε ΟΛΕΣ τις ανεπιθύμητες ενέργειες για ΟΛΑ τα φάρμακα Συμπληρώνοντας την «ΚΙΤΡΙΝΗ ΚΑΡΤΑ»

Για περισσότερες πληροφορίες ανατρέξτε στην Περίληψη Χαρακτηριστικών του Προϊόντος

**ZYPAdhera**<sup>®</sup>  
Σκόνη Ολανζαπίνης και Διαλύτης για  
Ενέσιμο Ενωτήριομα Παρατεταμένης Αποδόσμησης



ΦΑΡΜΑΞΕΡΒ - ΛΙΛΛΥ Α.Ε.Β.Ε.  
15ο χλμ. Εθνικής Οδού Αθηνών-Λαμίας, 14564 Κηφισιά ΤΗΛ.: 210 6294600 Fax: 210 6294610  
[info@lilly.gr](mailto:info@lilly.gr) [www.lilly.gr](http://www.lilly.gr)

Συνδεθείτε με τη ΦΑΡΜΑΞΕΡΒ-ΛΙΛΛΥ στα κοινωνικά δίκτυα



# Trittico®

Υδροχλωρική Τραζοδόνη

Καλύπτοντας το φάσμα  
των ασθενών με **μείζονα**  
**καταθλιπτική διαταραχή**



Τρόπος διάθεσης: Με ιατρική συνταγή.

TRITTICO PR.TAB 150MG/TAB ΒΤx14 (PVC/PVDC/Al blister): Τ.Π. 12,87 €, Χ.Τ. 13,50 €, Λ.Τ. 18,60 €

TRITTICO PR.TAB 300MG/TAB ΒΤx30 (PVC/PVDC/Al blister): Τ.Π. 12,60 €, Χ.Τ. 13,22 €, Λ.Τ. 18,22 €

Το TRITTICO είναι εμπορικό σήμα κατατεθέν της Sumitomo Dainippon Pharma Co., Ltd.  
Με επιφύλαξη κάθε νόμιμου δικαιώματος. 11/20. Ημερομηνία προετοιμασίας: Απρίλιος 2022.

TRIT.18-4-2022

Βοηθήστε να γίνουν τα φάρμακα πιο ασφαλή και  
Ανοηστε  
ΟΔΕΣ τις ανεπιθύμητες ενέργειες για  
ΟΔΑ τα φάρμακα  
Συμπληρώνοντας την «ΣΤΡΩΝΗ ΚΑΡΤΑ»  
Κάθε ύποπτη ανεπιθύμητη ενέργεια συσχετιζόμενη με το ιδιόμορφο σύστημα αναφοράς  
στο Τμήμα Αντεπιθύμητων Ενέργειών του Εθνικού Οργανισμού Φαρμάκων (ΕΟΦ)  
Τηλ: 2102040380, Fax: 2106549585, με τη χρήση της Κίτρινης Κάρτας Ασφάλειας  
και στην ιστοσελίδα του ΕΟΦ: [www.eof.gr](http://www.eof.gr) για έντυπη ή ηλεκτρονική απόφαση ή  
εναλλακτικά στην ANGELINI Pharma Ελλάς Α.Β.Ε.Ε. Τηλ: +30 210 6269200

Πριν τη συνταγογράφηση,  
συμβουλευθείτε την  
Περίληψη Χαρακτηριστικών  
του Προϊόντος.



**Angelini  
Pharma**

**Angelini Pharma Hellas A.B.E.E.**  
17<sup>ο</sup> χλμ Εθνικής Οδού Αθηνών-Λαμίας & Ρούπελ 4  
145 64, Ν. Κηφισιά, Αθήνα  
Τηλ: 210 6269200, Fax: 210 8071688  
e-mail: [info@angelinipharma.gr](mailto:info@angelinipharma.gr), [www.angelini.gr](http://www.angelini.gr)